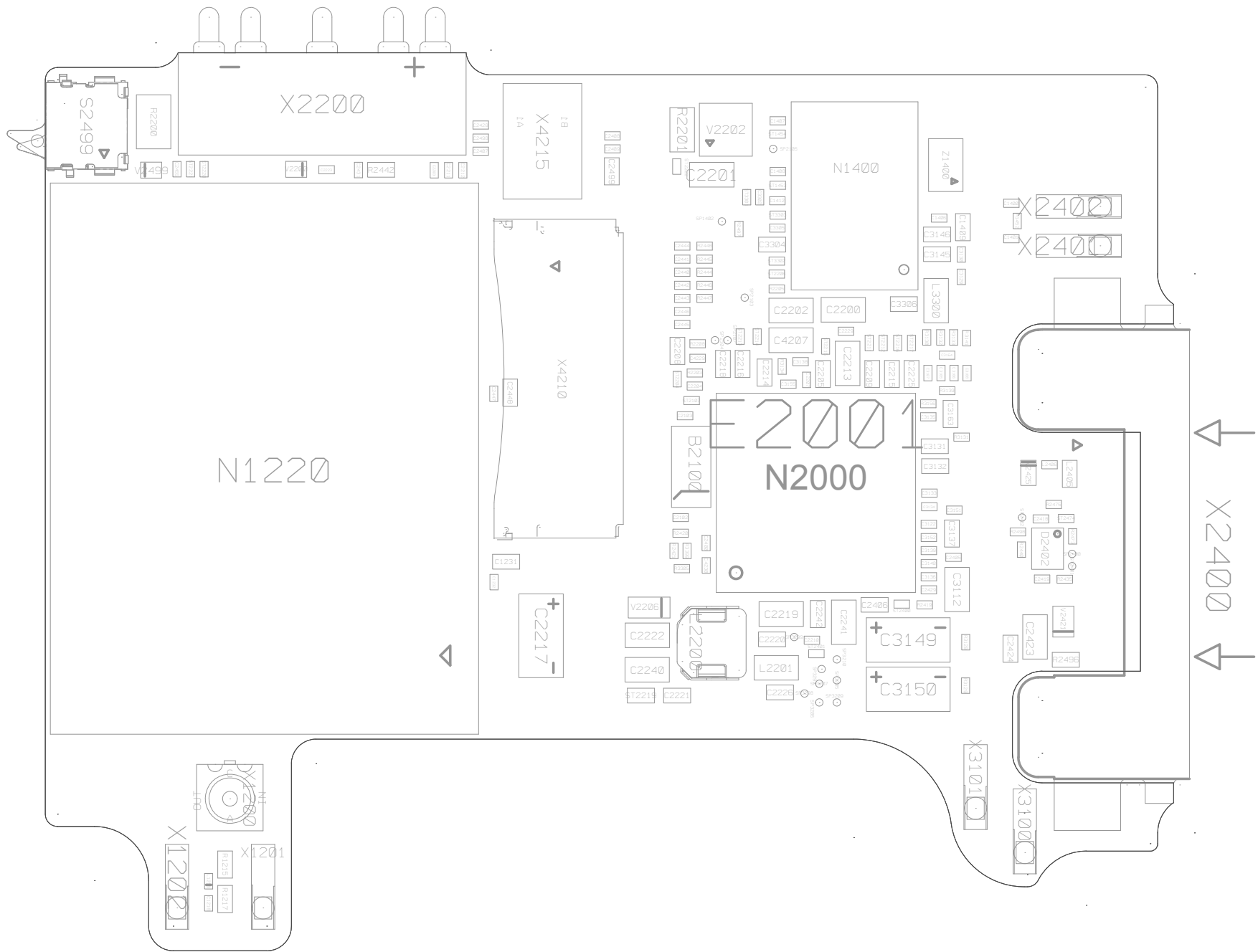




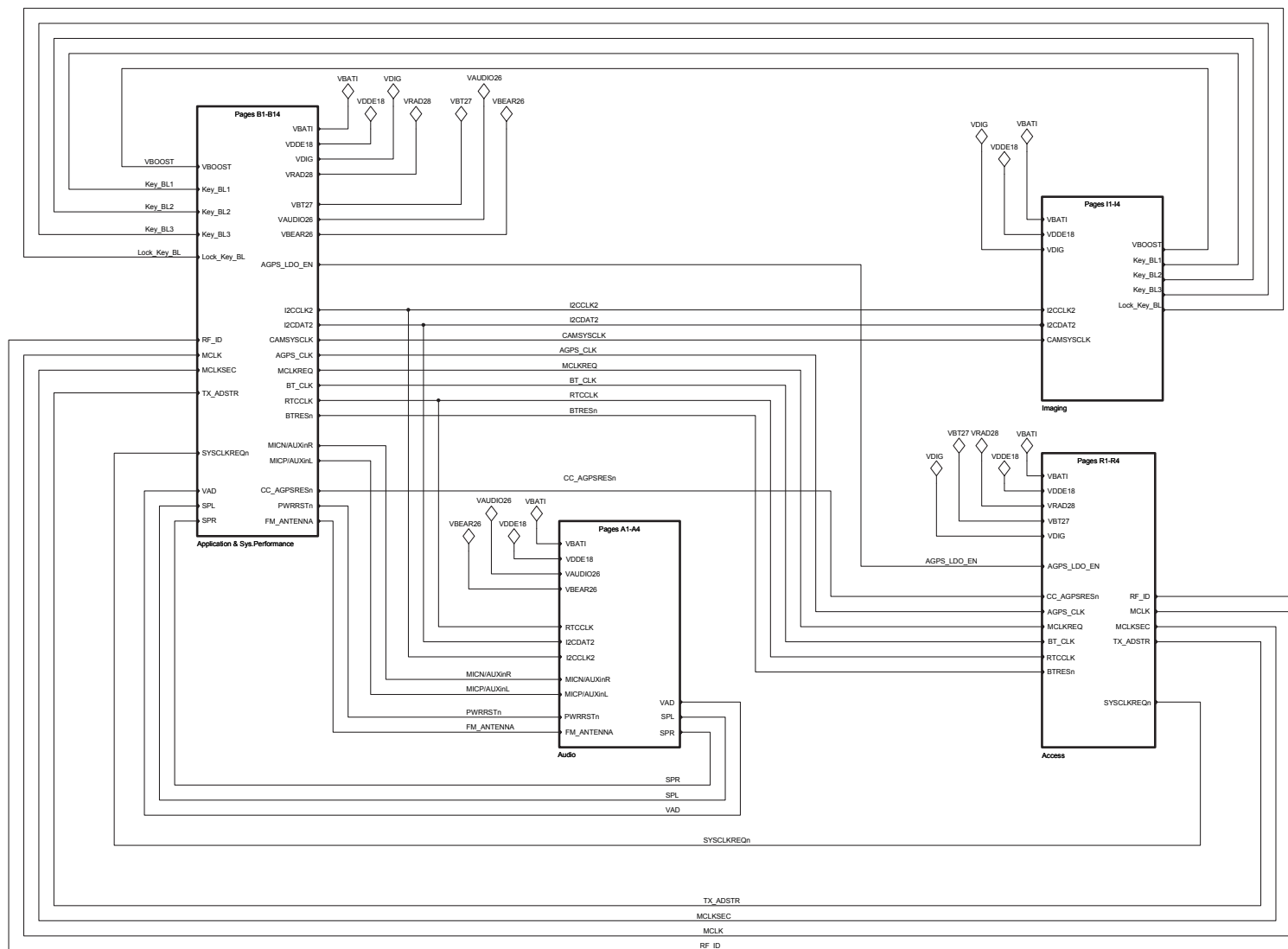
Schematics, Electrical

Applicable for T707

CONFIDENTIAL



Sony Ericsson		Prepared (Also Subject Responsible if Other)	
Drawing Rules ISO		Doc Responsible/Approved	
Tolerance		Date	
Reference		Product Name	
Scale		Document No.	
Units mm		Sheet	
Size A3			



ACCESS GPIO	
ACC_GPIO00	USB_HSTP
ACC_GPIO01	USB_HSDR
ACC_GPIO02	CTMS
ACC_GPIO03	CTMS
ACC_GPIO04	USB_HS_INCLK
ACC_GPIO05	USB_HSNXT
ACC_GPIO06	USB_HSDATA4
ACC_GPIO07	USB_HSDATA5
ACC_GPIO08	USB_HSDATA6
ACC_GPIO09	USB_HSDATA7
ACC_GPIO10	UART3_RX_AGPS_TX
ACC_GPIO11	UART3_RX_AGPS_RX
ACC_GPIO12	UART3_RX_AGPS_RTSS
ACC_GPIO13	UART3_RX_AGPS_CTS
ACC_GPIO14	CH_DET_DP
ACC_GPIO15	CH_DET_DM
ACC_GPIO16	USB_HSCHIP_SEL
ACC_GPIO17	AGPS_SYNC
ACC_GPIO18	USB_HSDATA3
ACC_GPIO19	(unused)
ACC_GPIO20	BT_SPI_DI
ACC_GPIO21	BT_SPI_DO
ACC_GPIO22	BT_SPI_CLK
ACC_GPIO23	OVP_FLAG
ACC_GPIO24	(unused)
ACC_GPIO25	(unused)
ACC_GPIO26	BT_SPI_Csn
ACC_GPIO27	BT_SPI_INT
ACC_GPIO28	AGPS_LDO_EN
ACC_GPIO29	AGPS_POWERON
ACC_GPIO30	(unused)
ACC_GPIO31	(unused)
ACC_GPIO32	(unused)
ACC_GPIO33	(unused)

APPLICATION GPIO	
APP_GPIO00	FM_INT_GPIO
APP_GPIO01	APP_LOG
APP_GPIO02	(unused)
APP_GPIO03	CAP_INT
APP_GPIO04	FLIP_SENSE
APP_GPIO05	(unused)
APP_GPIO06	(unused)
APP_GPIO07	(unused)
APP_GPIO08	(unused)
APP_GPIO09	CAM_LDO_EN
APP_GPIO10	(unused)
APP_GPIO11	(unused)
APP_GPIO12	MISDETECT
APP_GPIO13	MEGA_STANDBY
APP_GPIO14	CF_STANDBY
APP_GPIO15	DCON
APP_GPIO16	CAP_RES
APP_GPIO17	RED ITALY_LED_EN
APP_GPIO18	GESTURE_CONTROL_EN
APP_GPIO19	(unused)
APP_GPIO20	AMPCRL
APP_GPIO21	AX_INT_GPIO
APP_GPIO22	AX_INTI
APP_GPIO23	KEY_LOCK
APP_GPIO24	VOLED_EN
APP_GPIO25	(unused)

Confidential		SCHEMA		DIAGRAM	
Sony Ericsson Toleranser - Tolerances Top Schematic Top Ritzingregler - Drawing rules		Uppgjord given faktasvevning on annan - Prepared (also subject responsible if other)		Dokumentansvarig/Godkänd - Document responsible/Approved Datum - Date Rev 10 Produktbenämning - Product name Circuit Diagram Dokumentnr - Document nr 1213-7510 Blad - Sheet 1 of 1	

LZF 030 102/F RB

1 2 3 4 5 6 7 8 9 10 11

A

A

B

B

C

C

D

D

E

E

F

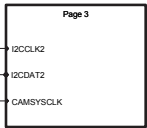
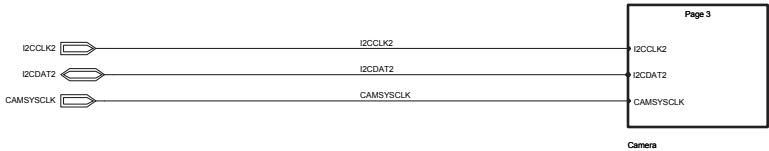
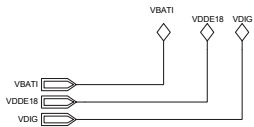
F

G

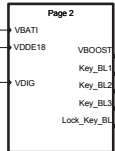
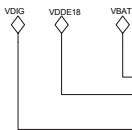
G

H

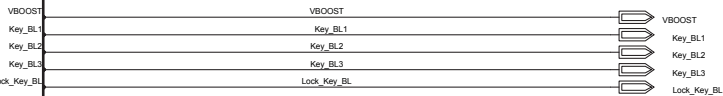
H



Camera



Display



Confidential

SCHEMA

DIAGRAM

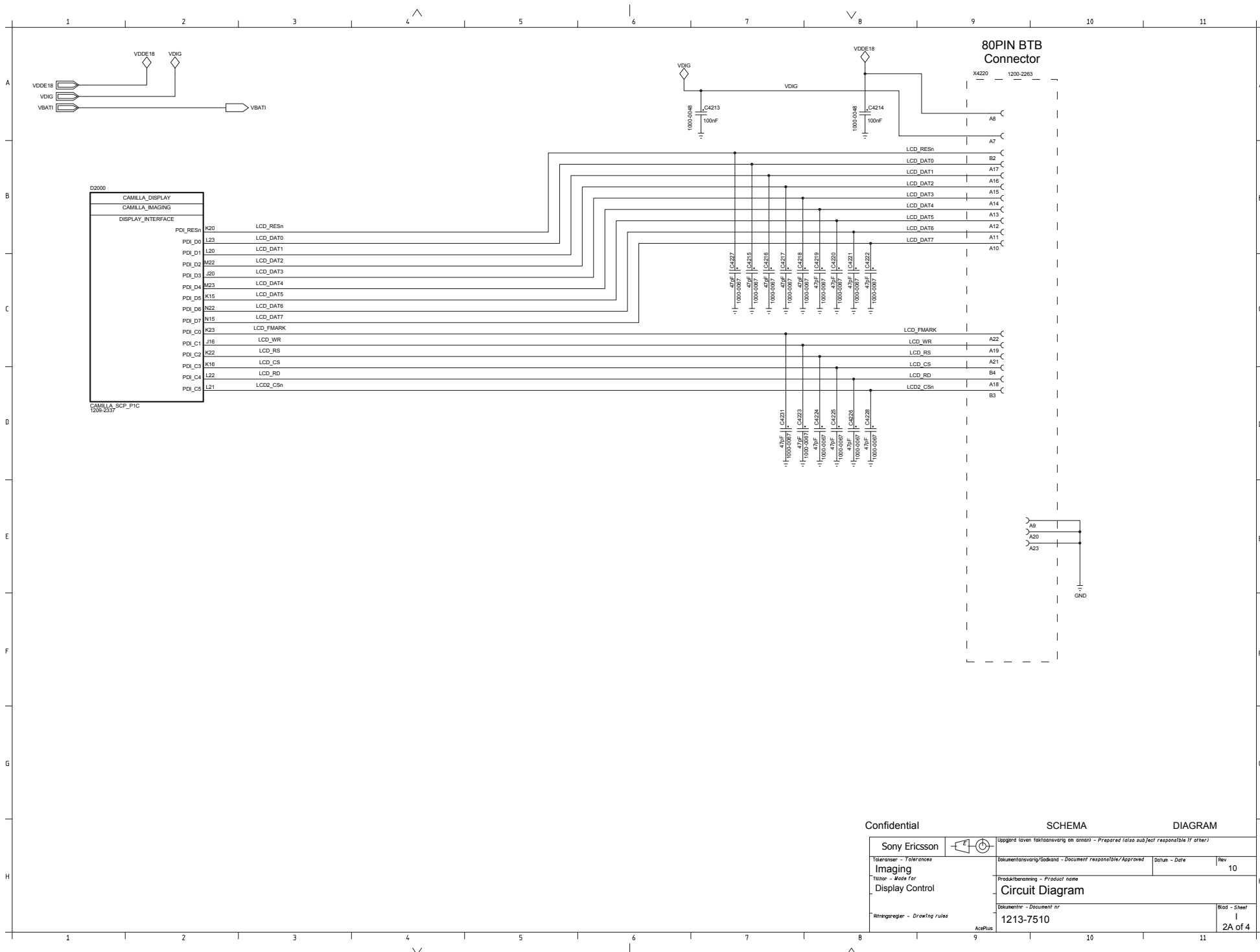
Sony Ericsson Toleranser - Tolerances Imaging Tillstånd - Note for Imaging Top Ättningsregler - Drawing rules	Uppgärda laven faktaansvarig an amant - Prepared (also subject responsible if other)	
	Dokumentansvarig/Ansvarig - Document responsible/Approved	Datum - Date Rev 10
	Produktbenämning - Product name Circuit Diagram	
	Dokumentnr - Document nr 1213-7510	Blad - Sheet I 1 of 4

1 2 3 4 5 6 7 8 9 10 11

^

^


LZF 030 102/F RB



Confidential

SCHEMA

DIAGRAM

Sony Ericsson		Uppgörd (även faktasvaring om annat) - Prepared (also subject responsible if other)		
Toleranser - Tolerances Imaging Tillhör - Made for Display Control Ritningsregler - Drawing rules		Dokumentansvarig/Sadant - Document responsible/Approved	Datum - Date	Rev 10
		Produktbenämning - Product name Circuit Diagram		
		Dokumentnr - Document nr 1213-7510		
		Blad - Sheet I 2A of 4		

A

9

10

11

AcePlus

1 2 3 4 5 6 7 8 9 10 11

A

B

C

D

E

F

G

H

A

B

C

D

E

F

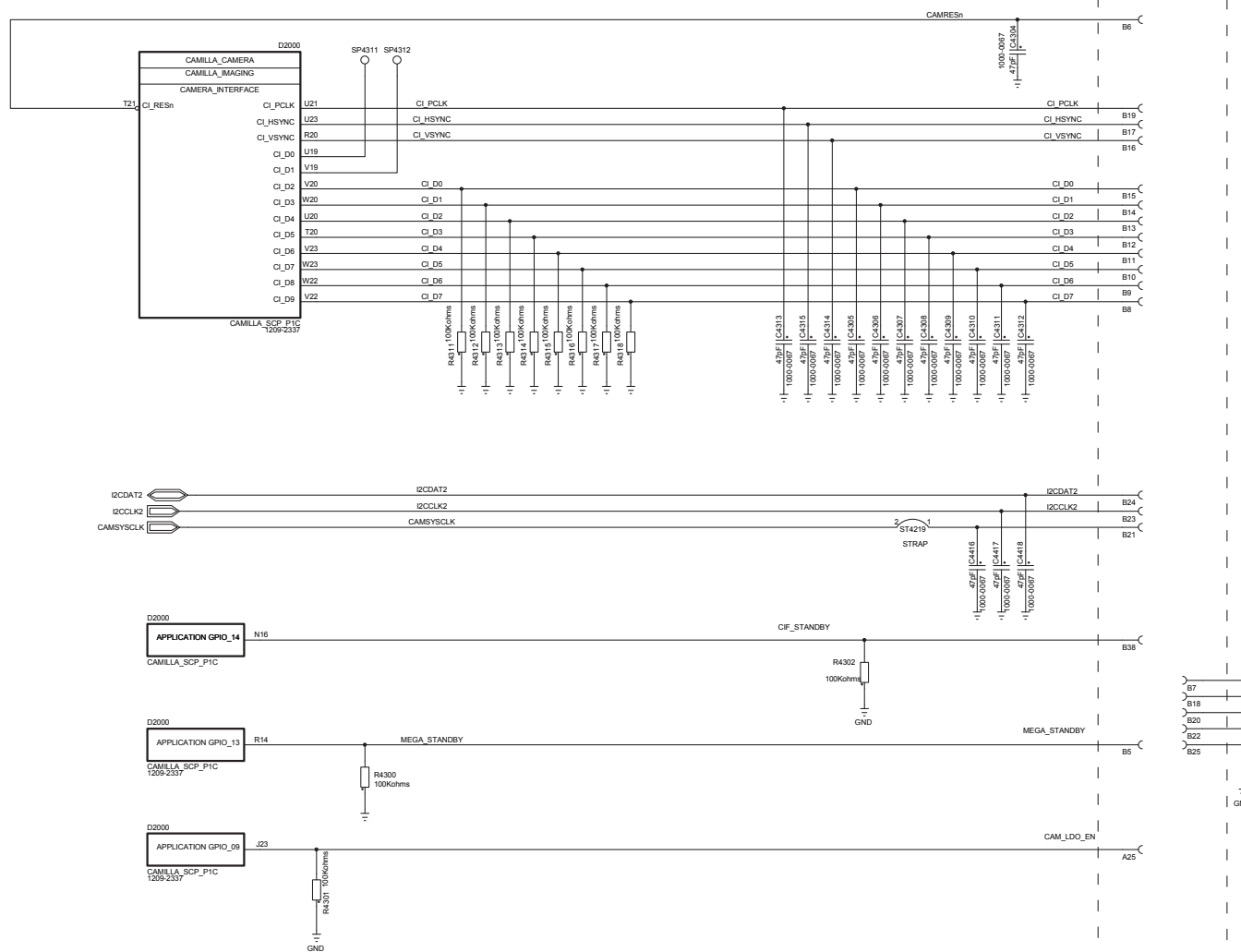
G

H

1 2 3 4 5 6 7 8 9 10 11

80PIN BTB
Connector

X4220 1200-2283

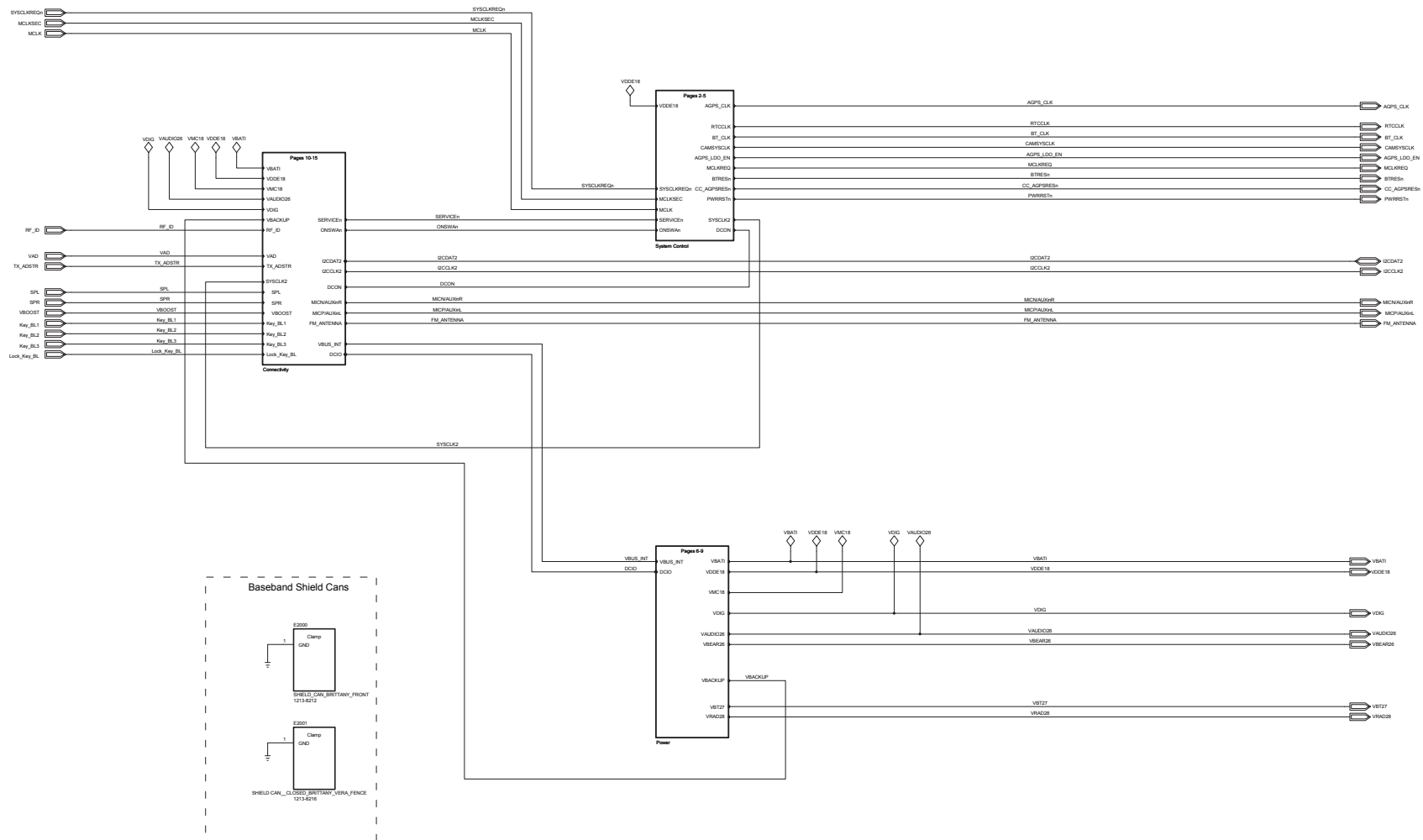


Confidential

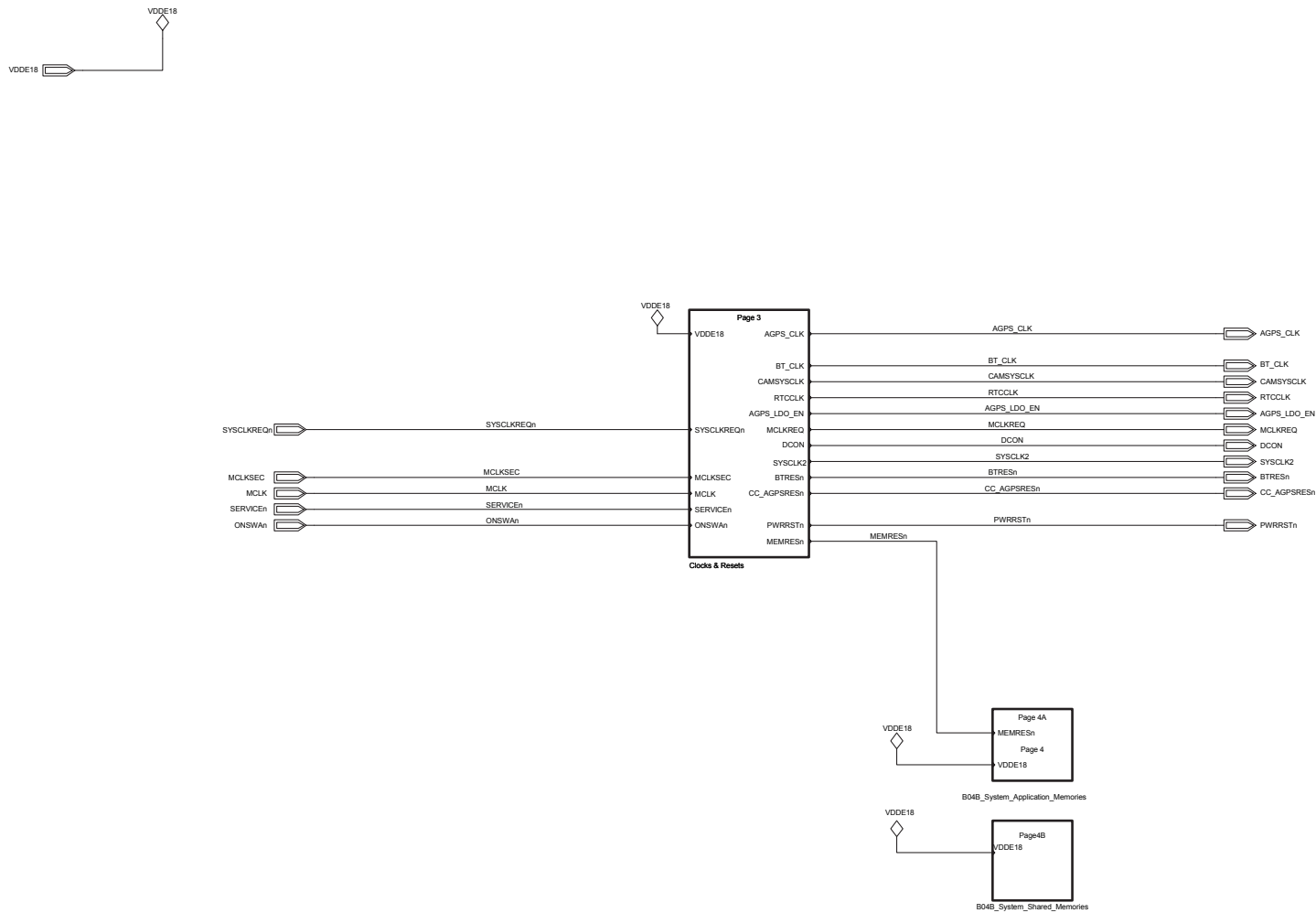
SCHEMA

DIAGRAM

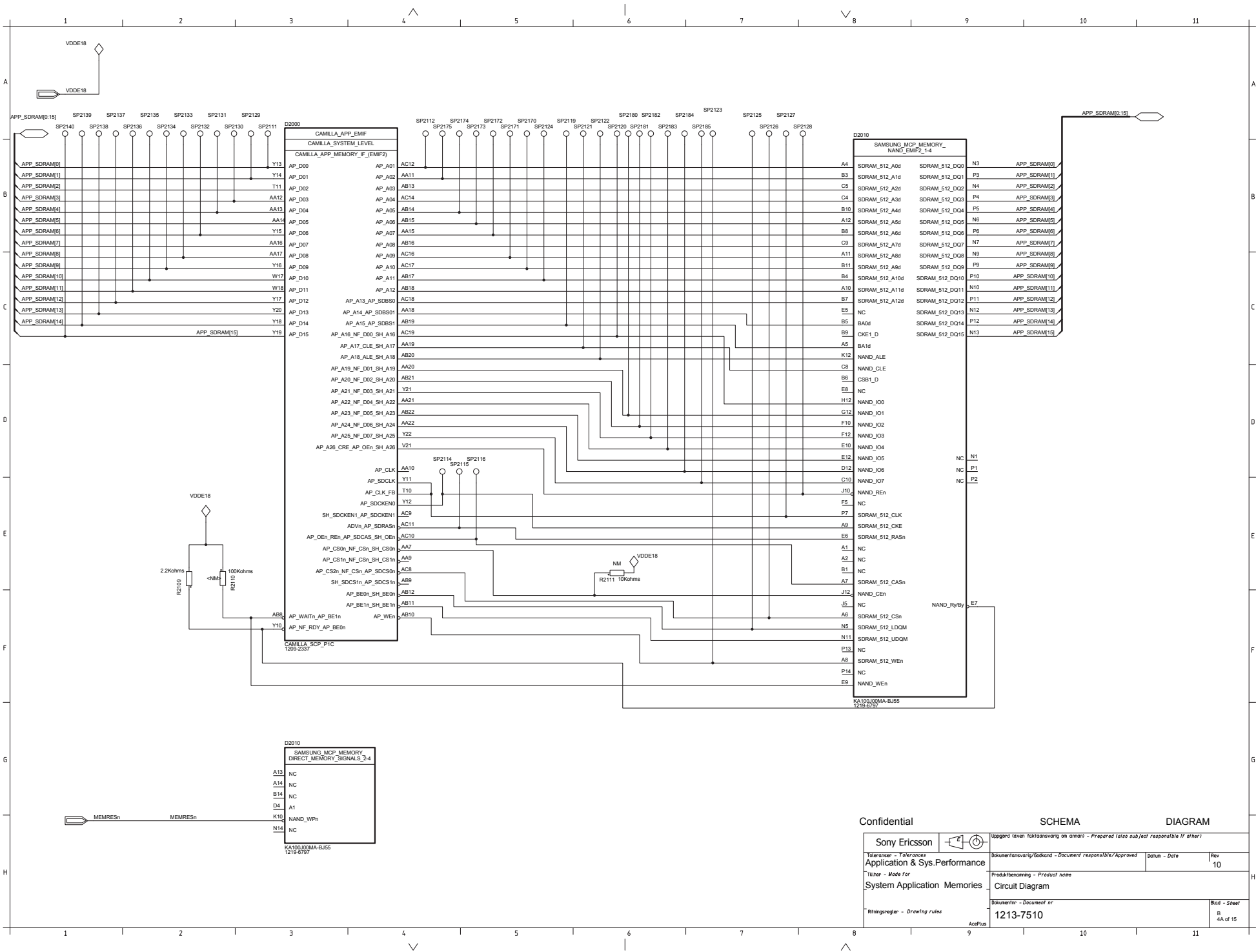
Sony Ericsson		Uppgörd (även faktansvarig om annat) - Prepared (also subject responsible if other)	
Toleranser - Tolerances	Imaging	Dokumentansvarig/Godkänd - Document responsible/Approved	Datum - Date
Tillhör - Made for	Camera	Produktbenämning - Product name	Rev 10
Ritningsregler - Drawing rules		Circuit Diagram	
		Dokumentnr - Document nr	Blad - Sheet
		1213-7510	I 3 of 4



LZF 030 102/F R8



Confidential		SCHEMA		DIAGRAM	
Sony Ericsson		Uppgörd läven faktansvarig an annan - Prepared (also sub/act responsible if other)			
Toleranser - Tolerances		Dokumentationsansvarig/Godkänd - Document responsible/Approved		Datum - Date	Rev
Application & Sys.Performance		Produktbenämning - Product name		H	
Titel - Made for		Circuit Diagram			
System Top		Dokumentnr - Document nr			
Ritningsregler - Drawing rules		1213-7510		Blad - Sheet	
		AcqPlus		B	
				2 of 15	



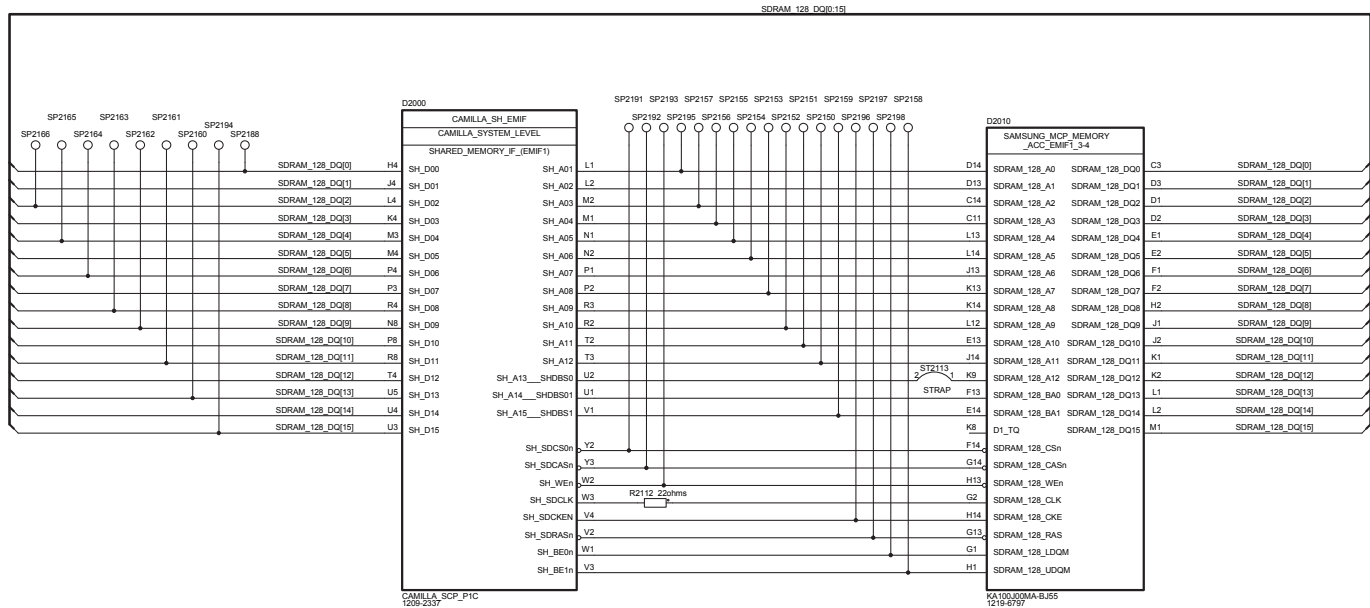
Confidential

SCHEMA

DIAGRAM

Sony Ericsson		Uppgärd (även faktasvaring om annan) - Prepared (also subject responsible if other)	
Toleranser - Tolerances		Dokumentansvarig/Godkänd - Document responsible/Approved	Datum - Date
Application & Sys.Performance			Rev 10
Tillver - Made for		Produktbenämning - Product name	
System Application Memories		Circuit Diagram	
Ritningsregler - Drawing rules		Documentnr - Document nr	Blad - Sheet
Acetlon		1213-7510	B 4A of 15

VDD618



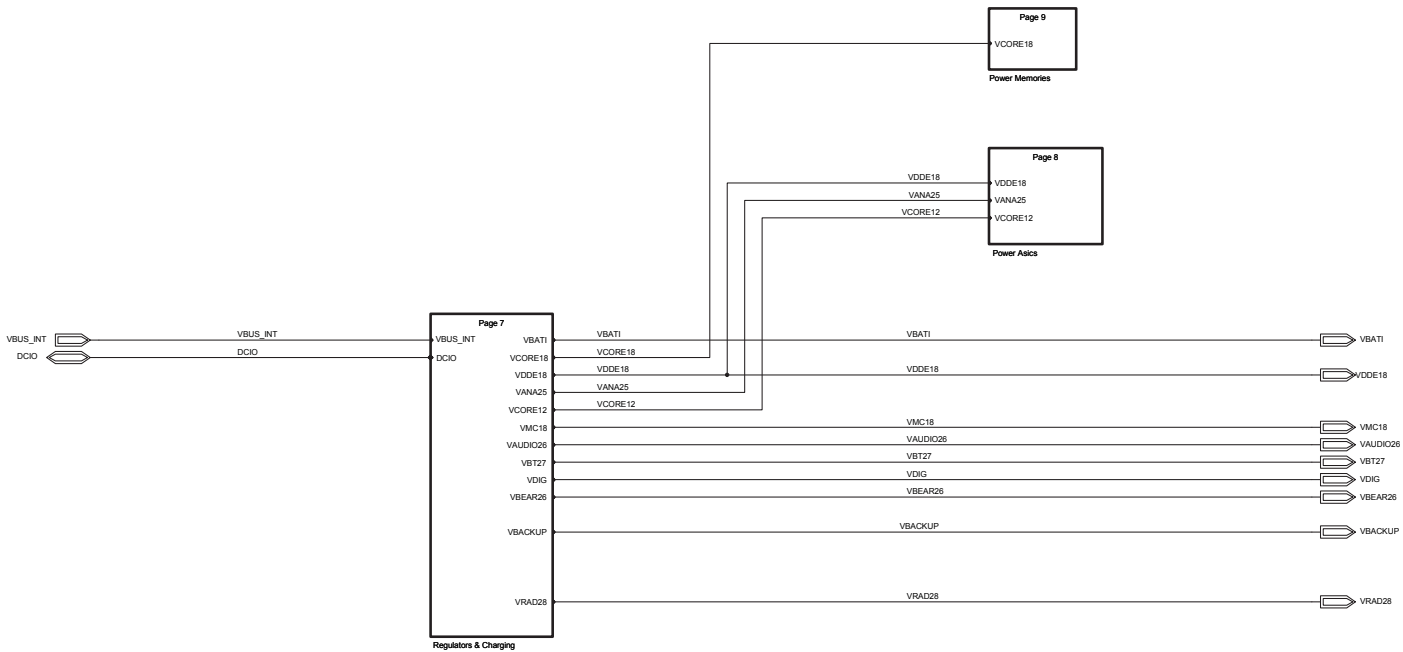
Confidential

SCHEMA

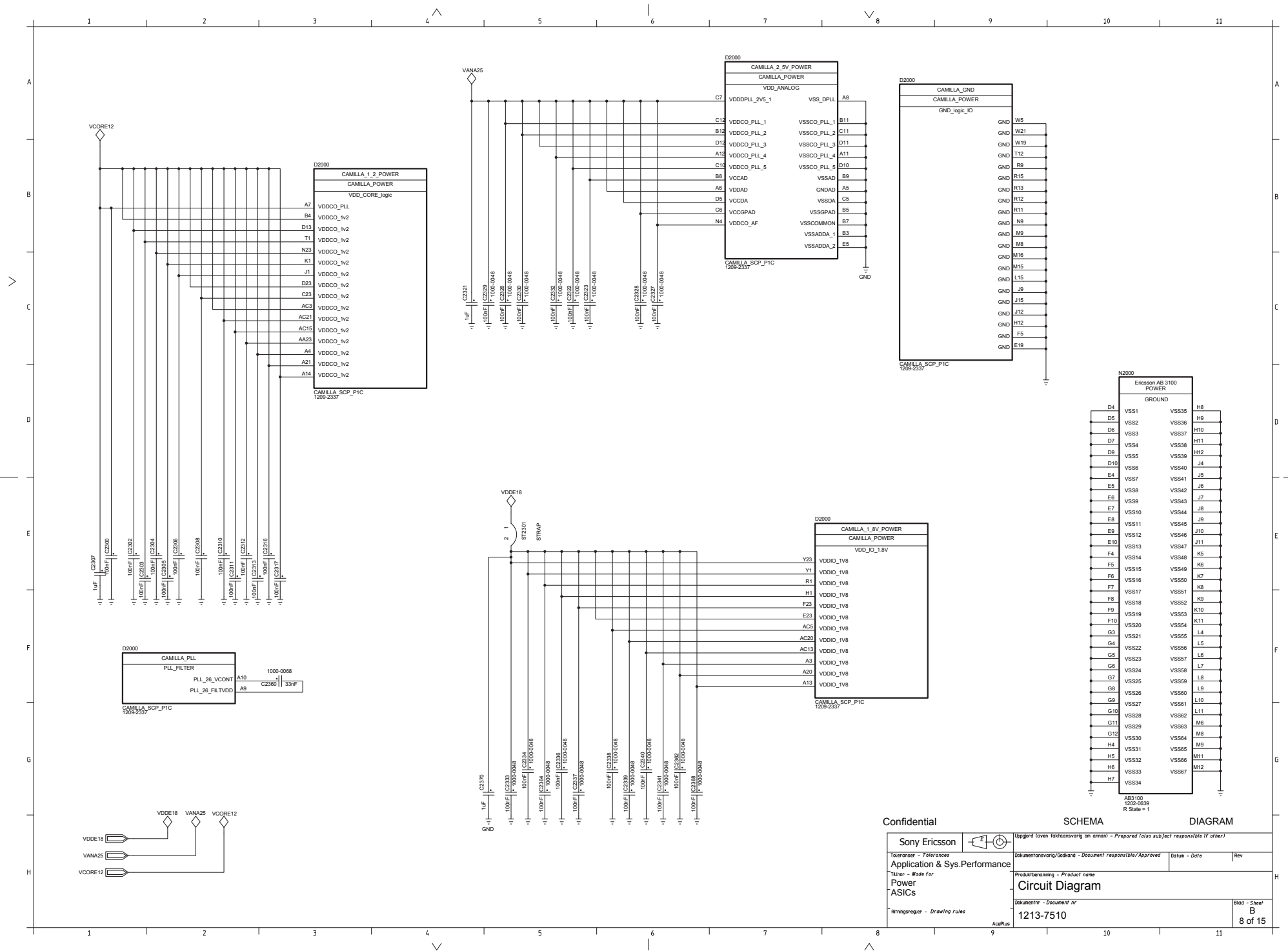
DIAGRAM

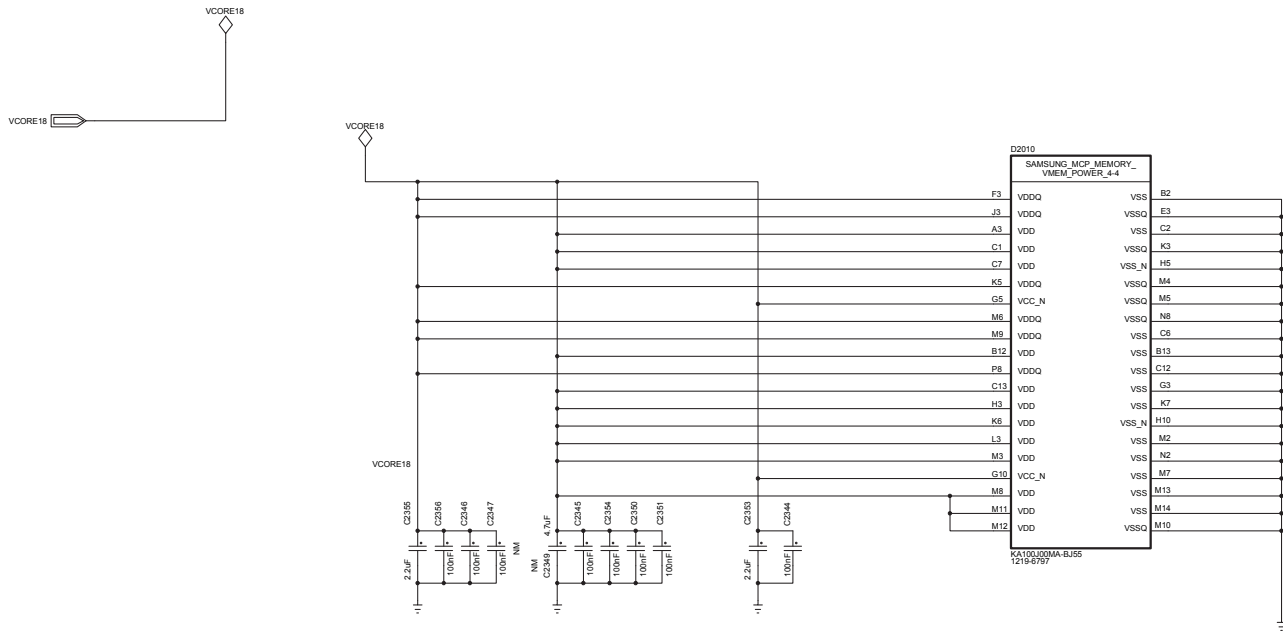
Sony Ericsson		Uppgörelsen är faktiskt ansvarig om annan - Prepared (also subject responsible if other)	
Tillämpnings - Ytterstans Application & Sys.Performance		Dokumentansvarig/Ansvarig - Document responsible/Approved	
Tillämpnings - Mode for		Datum - Date	
System Shared Memories		Rev 10	
Bilageregler - Drawing rules		Produktbenämning - Product name	
		Circuit Diagram	
		Dokumentnr - Document nr	
		1213-7510	
		Blad - Sheet	
		B 48 of 15	

AcetPlus

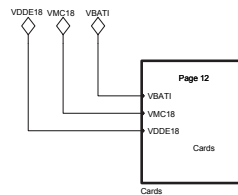
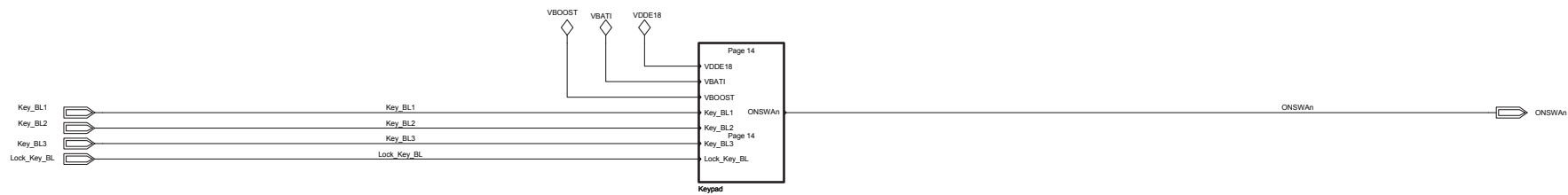
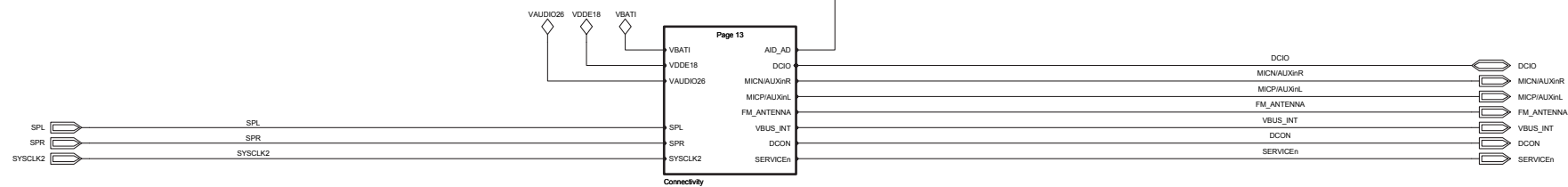
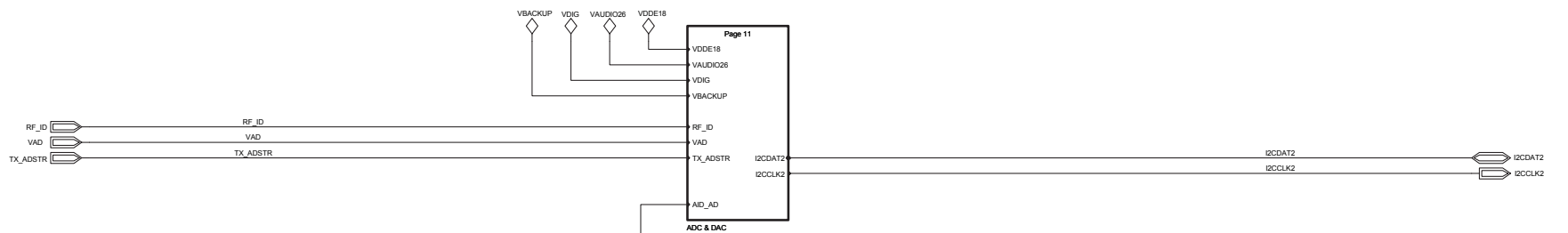
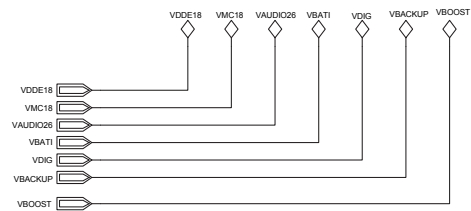


Confidential		SCHEMA		DIAGRAM	
Sony Ericsson		Uppgörelse (även faktasvaring om anord) - Prepared (also sub/sect responsible if other)			
Toleranser - Tolerances		Dokumentansvarig/Godkänd - Document responsible/Approved		datum - Date	
Application & Sys.Performance				Rev 10	
Tillhör - Made for		Produkt/beskrivning - Product name			
Power Top		Circuit Diagram			
Ritningsregler - Drawing rules		Dokumentnr - Document nr		Blad - Sheet	
AcePlus		1213-7510		B 6 of 15	





Confidential		SCHEMA		DIAGRAM	
Sony Ericsson		Uppgärd given faktisktansvarig on annan - Prepared (also subject responsible if other)			
Toleranser - Tolerances		Dokumentansvarig/Godkänd - Document responsible/Approved		Datum - Date	Rev
Application & Sys.Performance		Produktbenämning - Product name			
Tillver - Made for		Circuit Diagram			
Power		Dokumentnr - Document nr			
Memories		1213-7510			
Ritningsregler - Drawing rules		Blad - Sheet			
AcePlus		B			
		9 of 15			

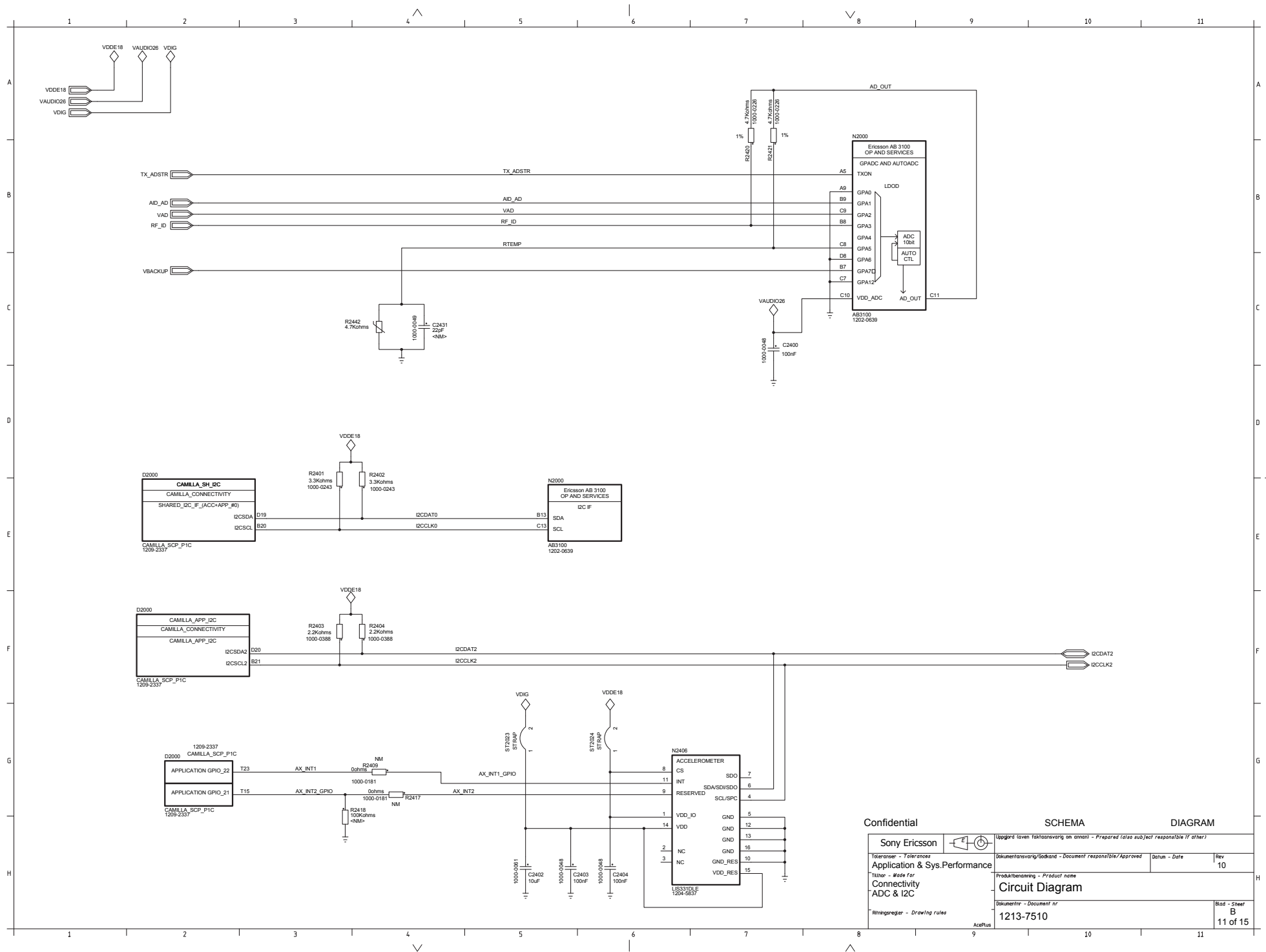


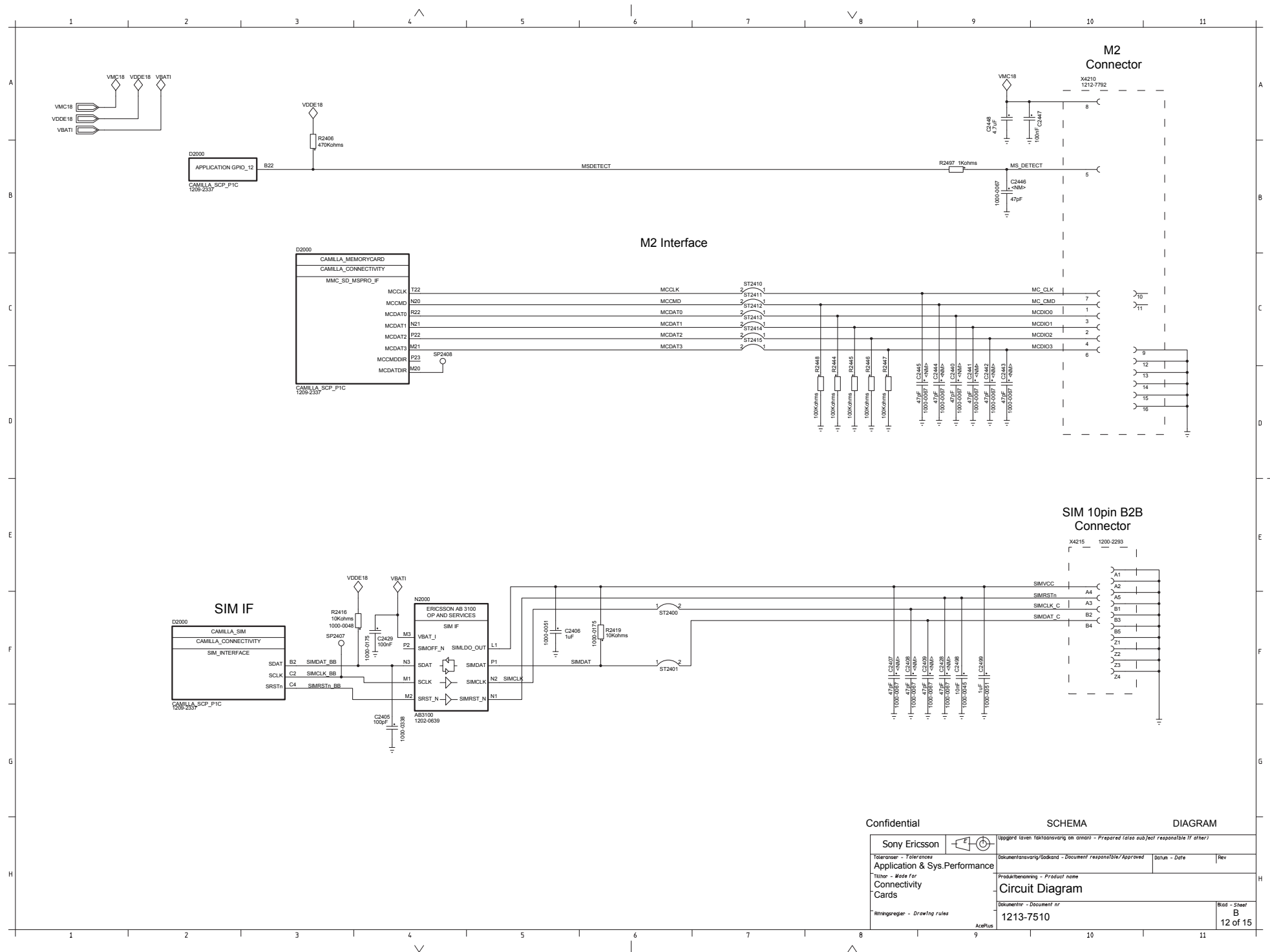
Confidential

SCHEMA

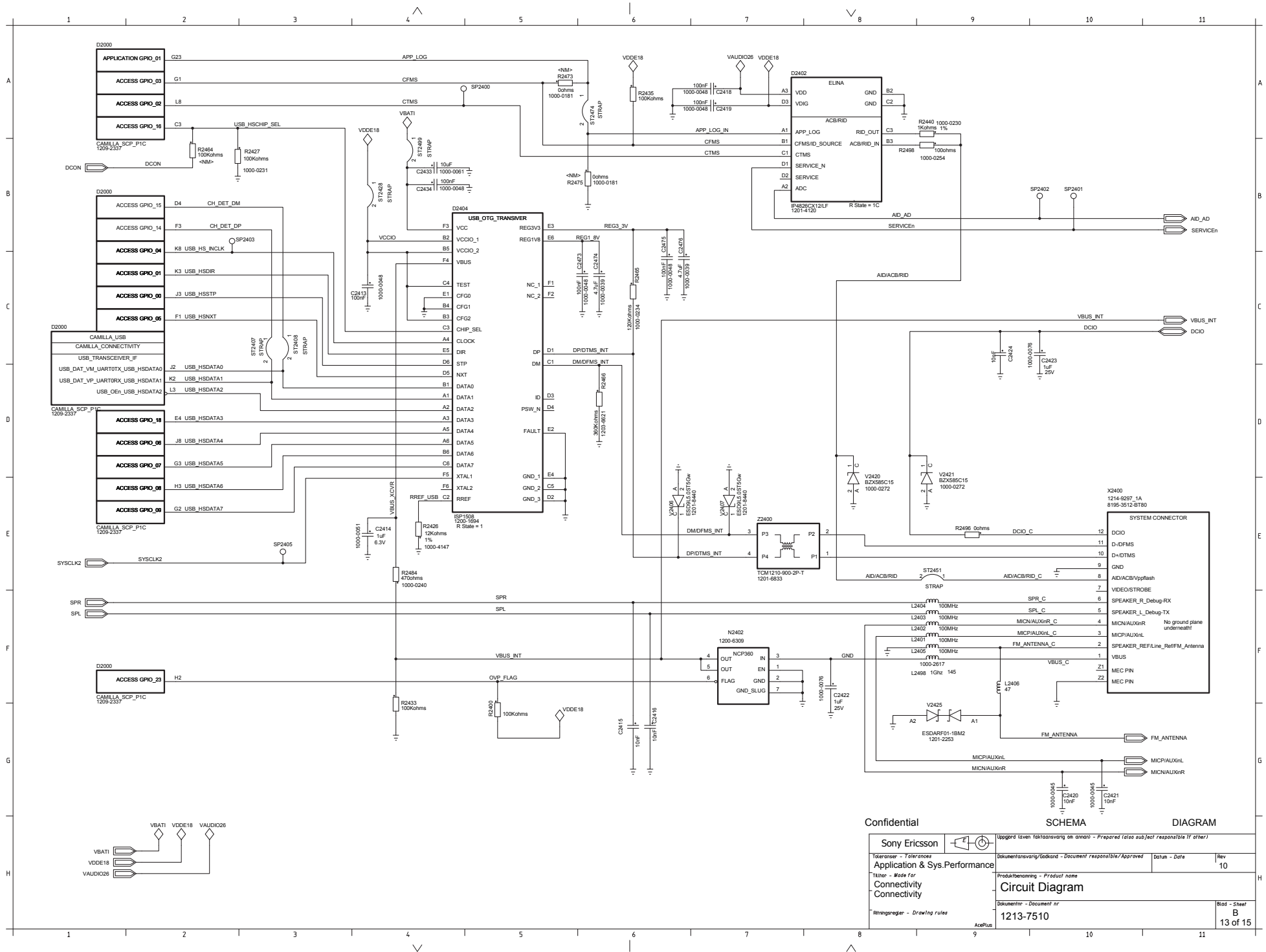
DIAGRAM

Sony Ericsson		Uppgörd läven faktansvarig an annan - Prepared (also sub/ect responsible if other)	
Toleranser - Tolerances		Dokumentansvarig/Godkänd - Document responsible/Approved	
Application & Sys.Performance		Datum - Date	Rev 10
Titel - Made for		Produkt/benämning - Product name	
Connectivity		Circuit Diagram	
Top		Blad - Sheet	
Ritningsregler - Drawing rules		1213-7510	
AzePlus		Blad - Sheet	
		10 of 15	

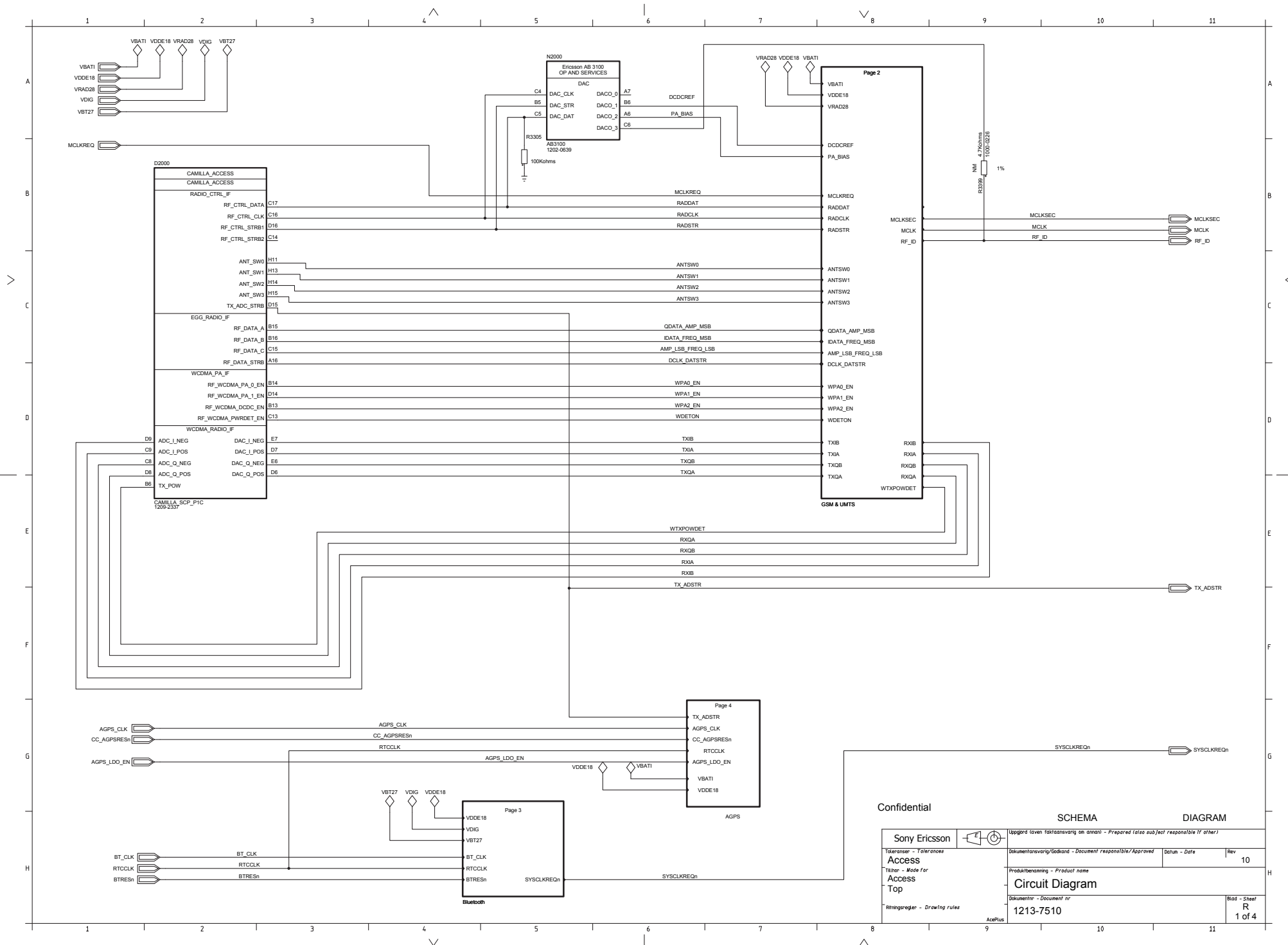


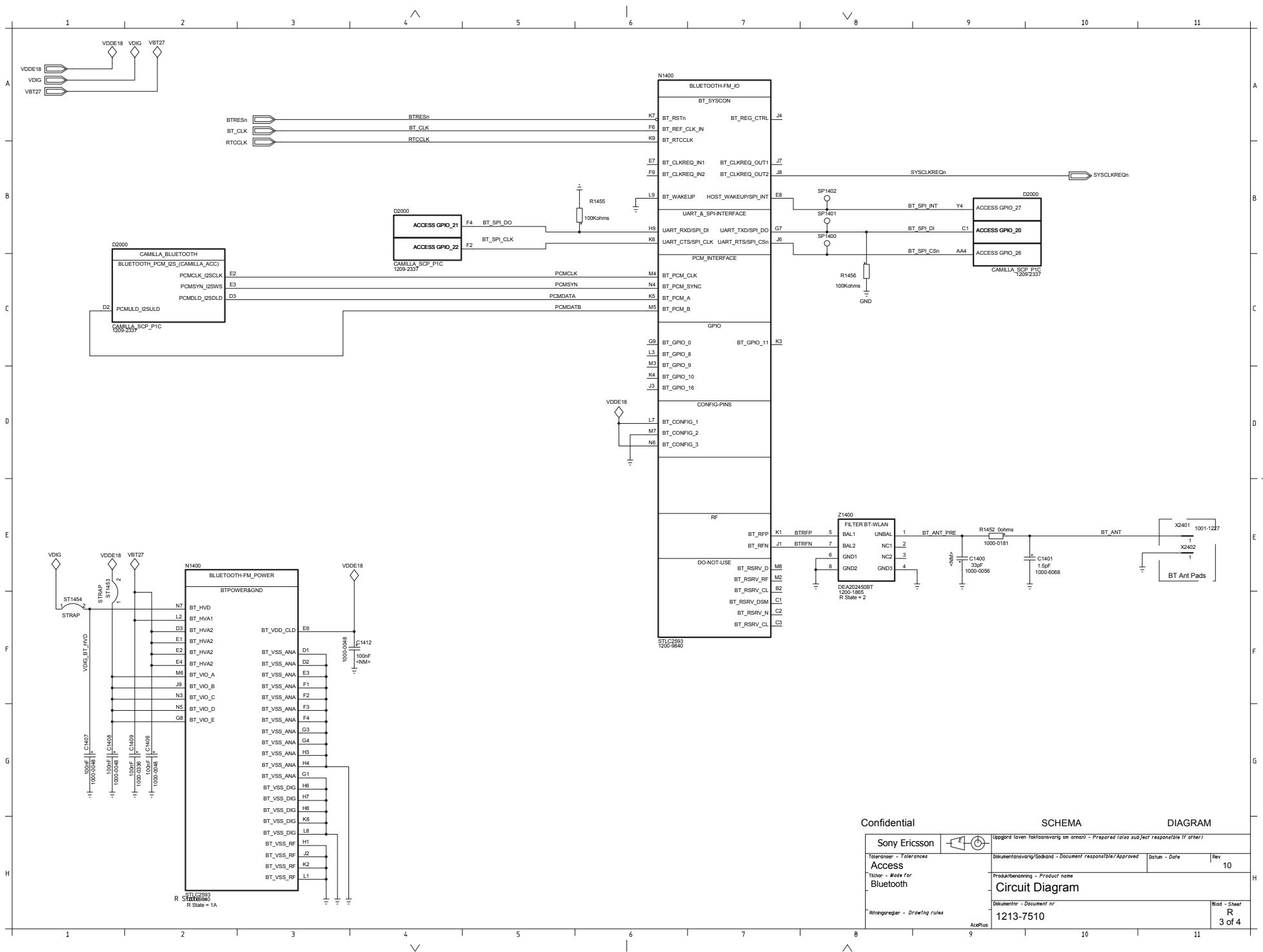


LZF 030 102/F RB

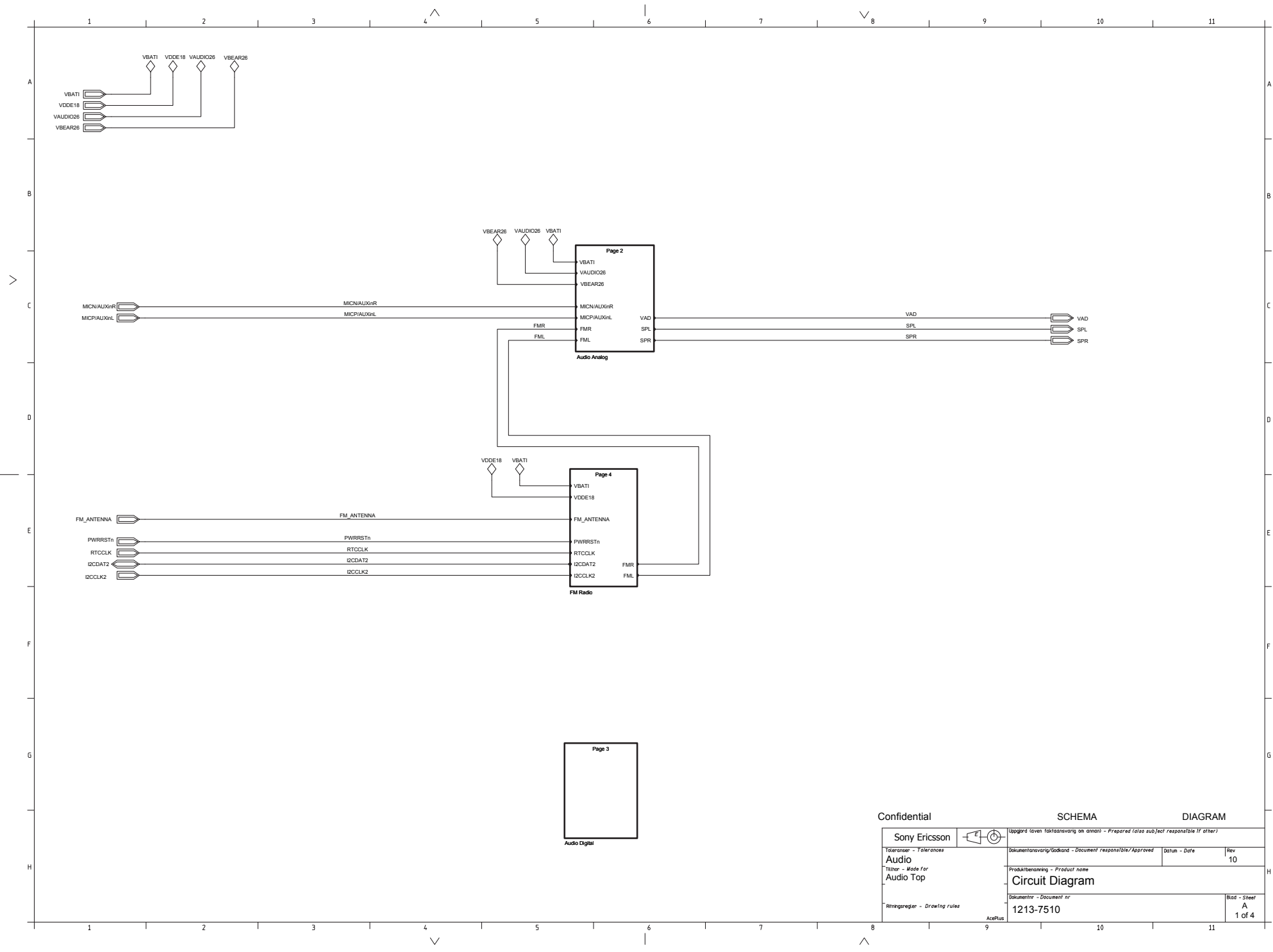


Confidential		SCHEMA		DIAGRAM	
Sony Ericsson		Uppger given färdigställning av anslut - Prepared (also subject responsible if other)			
Toleranser - Tolerances		Säkerhetsavsnitt/Åtgärder - Document responsible/Approved		Datum - Date	
Application & Sys.Performance		Produktbevakning - Product name		Rev 10	
Filter - Made for		Circuit Diagram			
Connectivity		Dokumentnr - Document nr			
Connectivity		1213-7510			
Ritningsregler - Drawing rules		Blad - Sheet		B 13 of 15	

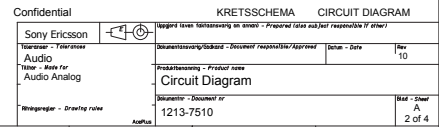




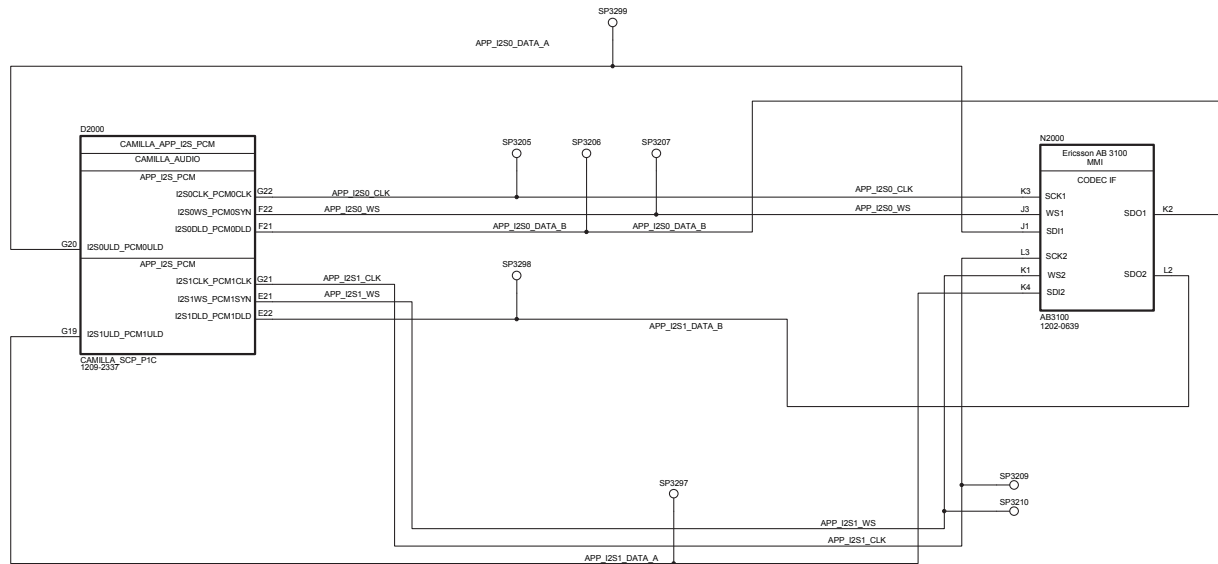
LZF 030 102/F R8



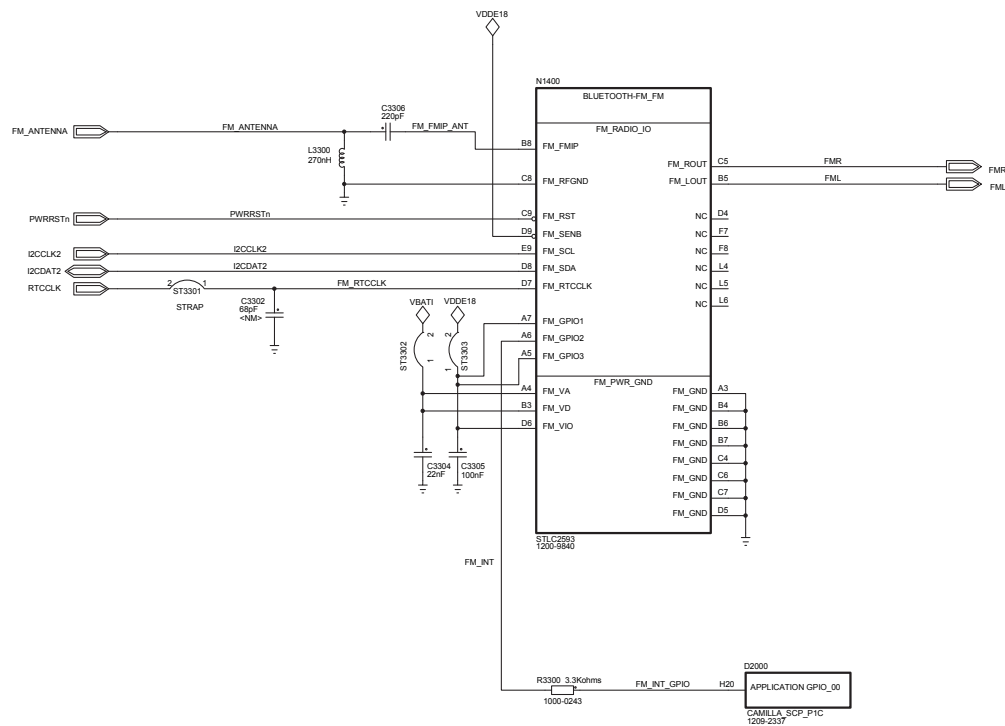
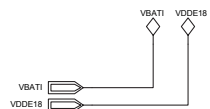
Confidential		SCHEMA		DIAGRAM	
Sony Ericsson Toleranser - Tolerances Audio Tillver - Made for Audio Top Ritningsregler - Drawing rules		Uppgjord given faktasvavng on annan - Prepared (also sub)ect responsible if other)		Datum - Date	
		Dokumentansvarig/Godkand - Document responsible/Approved		Rev	
		Produktbenavning - Product name		10	
		Circuit Diagram		Blad - Sheet	
		Dokumentnr - Document nr		A	
		1213-7510		1 of 4	



LZF 030 102/F R6



Confidential		SCHEMA		DIAGRAM	
Sony Ericsson		Uppgärd (given faktiskt ansvarig om annan) - Prepared (also subject responsible if other)			
Toleranser - Tolerances		Dokumentansvarig/Godkänd - Document responsible/Approved		Datum - Date	Rev
Audio		Produktbenämning - Product name			
Tätnings - Made for		Circuit Diagram			
Audio Digital		Dokumentnr - Document nr			
Ritningsregler - Drawing rules		1213-7510		Blad - Sheet	
				A	
				3 of 4	



Confidential		SCHEMA		DIAGRAM	
Sony Ericsson		Ippgord lösen faktasavang on annan - Prepared (also subject responsible if other)			
Toleranser - Tolerances		Dokumentansvarig/Godkänd - Document responsible/Approved		Datum - Date	Rev 10
Tillver - Made for		Produktbenämning - Product name			
FM Radio		Circuit Diagram			
Ritningsregler - Drawing rules		Dokumentnr - Document nr		Blad - Sheet	
		1213-7510		A	
				4 of 4	



Revision History

Rev.	Date	Changes / Comments
1	2009-12-10	1 st release